

## Installation Guide



USCK077014



Facebook: BELZ

**After-Sales Contact:**

- Email: [CKAI2024@yahoo.com](mailto:CKAI2024@yahoo.com)
- Website: [www.belz.Ltd](http://www.belz.Ltd)

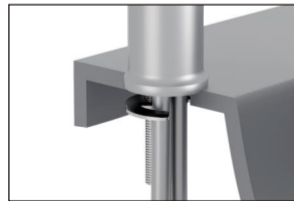
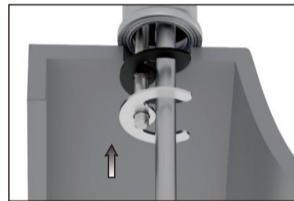
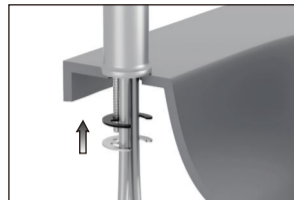
## Pre-Installation Preparation

- Read these instructions thoroughly before installation and make sure you have all the necessary tools.
- Turn off the main water supply valves (hot and cold) and drain any water left in the pipes. If there are any blockages, clear them out.



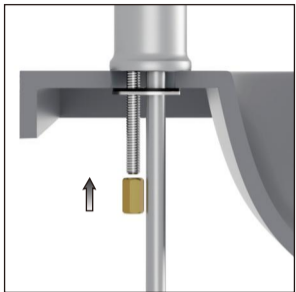
## 1. Position the Base and Insert the Tap

- Fit the rubber ring underneath the base, then place the base over the mounting holes in the worktop.
- Ensure the base fully covers the holes and fits snugly against the worktop surface.
- Insert the tap and supply lines through the mounting hole. Put the tap's threaded stem and the two supply lines down through the mounting hole.
- Make sure the lines aren't twisted and the tap is sitting straight.



## 2. Install the Washers

- Slide both the rubber washer and the metal horseshoe washer onto the threaded stem, ensuring the metal horseshoe washer is positioned below the rubber washer.
- Push both the rubber washer and the metal horseshoe washer upward.
- Make sure both the rubber washer and the metal horseshoe washer are firmly against the sink bottom.



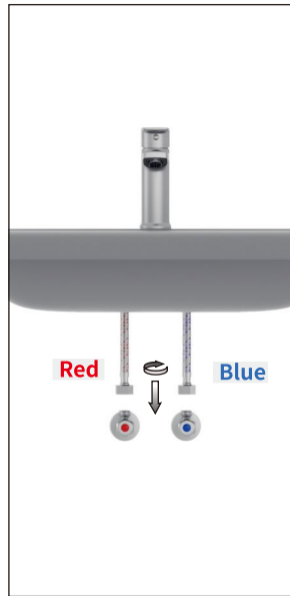
### 3. Secure the Tap

- Thread the mounting nut onto the stem.



- Using the installation wrench supplied with the tap, gradually tighten the mounting nut upward until the tap is secure and does not wobble.

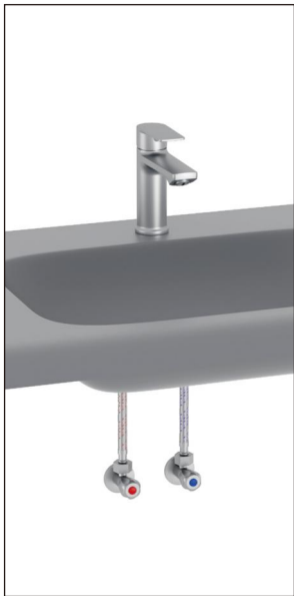
**Note: Do not overtighten, as this may damage the tap or the worktop.**



### 4. Connect the Supply Lines

**Check Gaskets:** Inspect the black rubber gasket inside each hose end to ensure it is intact and correctly positioned. If necessary, use the included spare gasket.

- Connect the red supply line to the left (hot water) valve and the blue supply line to the right (cold water) valve.
- Use a wrench to gently tighten the connection nuts to prevent leaks. Do not use excessive force when tightening the nut on the hot water valve.



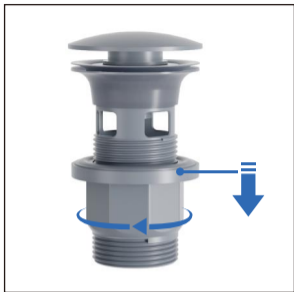
**Important:** For the tap to work properly, the hot water supply must be connected on the left and the cold water supply on the right.

**Note:** Do not twist the lines while connecting them, or the connections could come loose.



## **5. Important Notes & After-Sales Contact**

- Make sure the handle is in the off position before testing the tap.
- After installation, turn on the main water supply and check for leaks. Test the handle to make sure it moves smoothly.
- Do not use any acidic cleaners, abrasive pads, or steam cleaners on the tap surface.
- For warranty or support, please reach out to our customer service team.



If your purchase includes a pop-up waste, please follow the installation steps below:

**Note: Ensure the washer is placed inside the lock nut.**



### 1. Disassemble for Installation

- Remove the washer and lock nut from the main body.



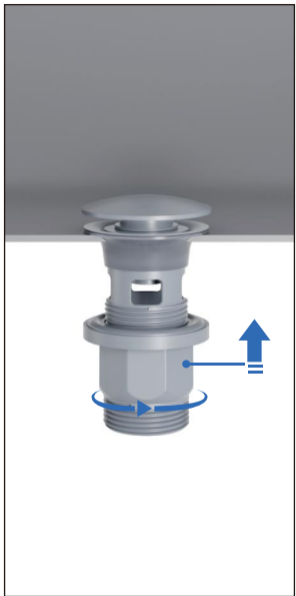
### 2. Ensure Sealing Gasket is Properly Placed

- Push the sealing gasket to the top of the main body before inserting the waste.



### 3. Insert Main Body

- Insert the main body into the sink hole.



#### 4. Secure from Underneath

- Reattach the washer and lock nut from underneath the sink.
- Tighten gently until secure — do not overtighten, to avoid damaging the components.